

Dott. Arch. Massimo DESMERO
Via Roma n°59 - 0171 260476
12011 - Borgo San Dalmazzo (CN)

Dott. Arch. Lorenzo MARTINELLI
Dott. Arch. Sergio ZORNIOTTI
Via Staffarda n°7 - 0172 636426
12045 - Fossano (CN)

COMUNE	LIMONE PIEMONTE
OGGETTO	INTERVENTO TURISTICO RICETTIVO
	LOCALITA' CAMPO PRINCIPE ZONA URBANISTICA 3/TR2/G.2
COMMITT.	Porta Rossa S.p.A.

TIPOLOGIA EDILIZIA - ALBERGHIERA
EDIFICIO H - Calcoli planovolumetrici

Pratica 3296 - 1703
Data MAGGIO 2019
Aggiorn.
Aggiorn.

Scala
1:200
Tavola
8.d

PARAMETRI URBANISTICI IN PROGETTO

SUPERFICIE COPERTA

$$[(8.80 \times 3.40 + 9.75 \times 5.10 + 9.75 \times 5.10 + 10.30 \times 3.80 + 8.75 \times 2.12 + 6.33 \times 1.84 + 2.00 \times 2.40 + 6.33 \times 1.84 + 8.75 \times 2.12 + 9.75 \times 5.10 + 10.30 \times 1.90) + (2.84 \times 2.42 + 2.70 \times 6.00 + 5.30 \times 3.87 + 7.20 \times 3.49 + 2.00 \times 4.31)] \times 2$$

Totale = 760.7 mq

SUPERFICIE UTILE LORDA AUTORIMESSE

$$14.70 \times 10.30 + 14.65 \times 7.73 + 13.81 \times 6.51 + 13.12 \times 11.84 + 5.13 \times 15.05 + 14.13 \times 6.78 + 4.20 \times 8.10 + 20.12 \times 9.17 + 5.05 \times 20.05 = 1002.7 \text{ mq}$$

SUPERFICIE UTILE LORDA ALBERGO

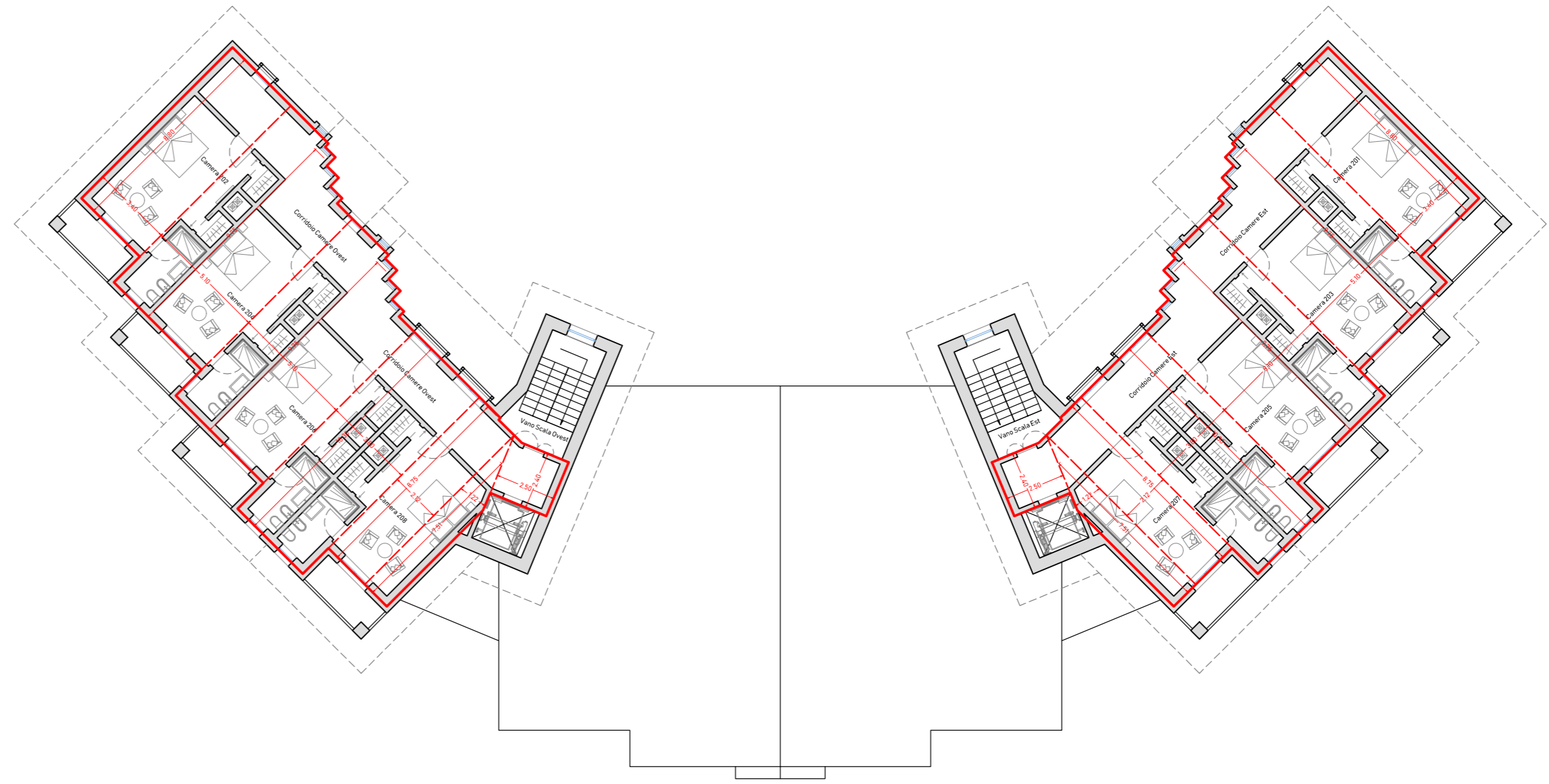
Piano terreno
 $(8.80 \times 3.40 + 9.75 \times 5.10 + 9.75 \times 5.10 + 10.30 \times 3.80 + 8.75 \times 2.12 + 6.33 \times 1.84 + 2.00 \times 2.40 + 6.33 \times 1.84 + 8.75 \times 2.12 + 9.75 \times 5.10 + 10.30 \times 1.90) \times 2 = 606.0 \text{ mq} \times 3.35 \text{ m h} = 2030.1 \text{ mc}$

Piano primo
 $(8.80 \times 3.40 + 9.75 \times 5.10 + 9.75 \times 5.10 + 10.30 \times 3.80 + 8.75 \times 2.12 + 7.51 \times 1.22 + 2.00 \times 2.40 + 7.51 \times 1.22 + 8.75 \times 2.12 + 9.75 \times 5.10 + 10.30 \times 1.90) \times 2 = 596.2 \text{ mq} \times 2.85 \text{ m h} = 1699.2 \text{ mc}$

Piano sottotetto
 $(8.80 \times 3.40 + 9.75 \times 5.10 + 9.75 \times 5.10 + 10.30 \times 3.80 + 8.75 \times 2.12 + 7.51 \times 1.22 + 2.50 \times 2.40) \times 2 = 404.5 \text{ mq} \times 2.99 \text{ m h}_{med} = 1210.7 \text{ mc}$

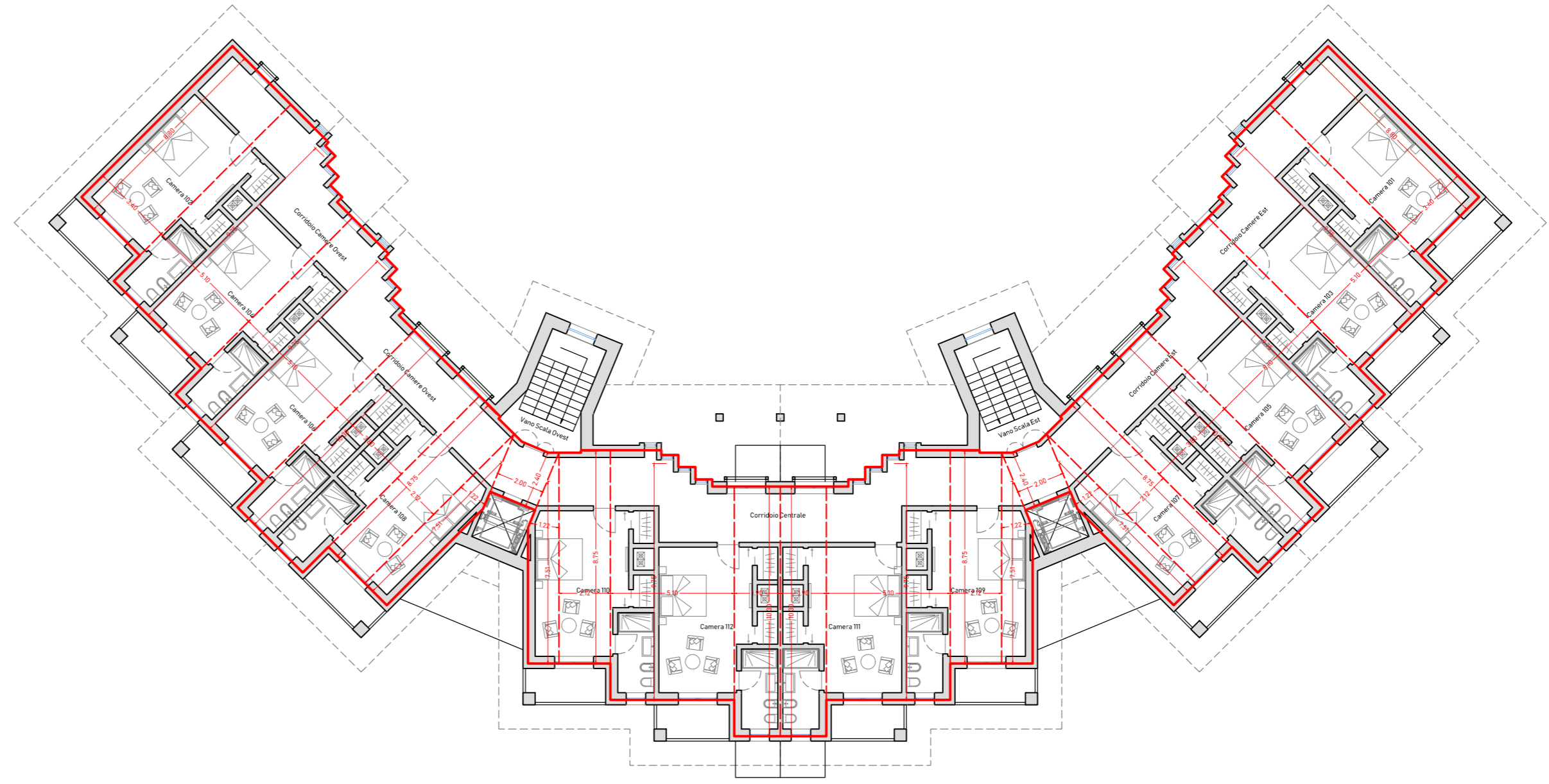
Totale SUL = 1606.7 mq

Totale VOLUME = 4940.0 mc



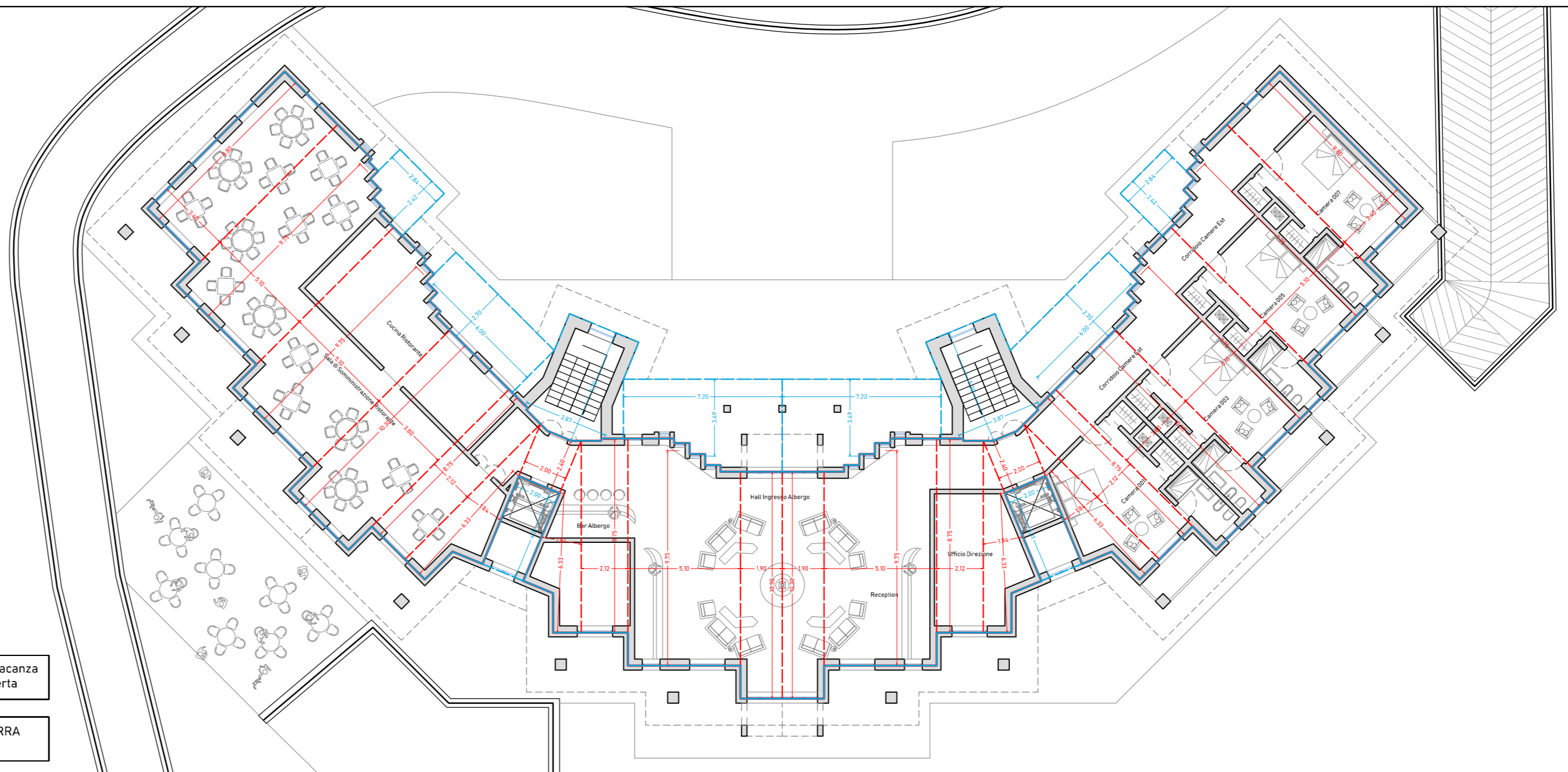
Calcolo Vol. Appart. Vacanza

PIANTA PIANO SOTTOTETTO
Scala 1:200



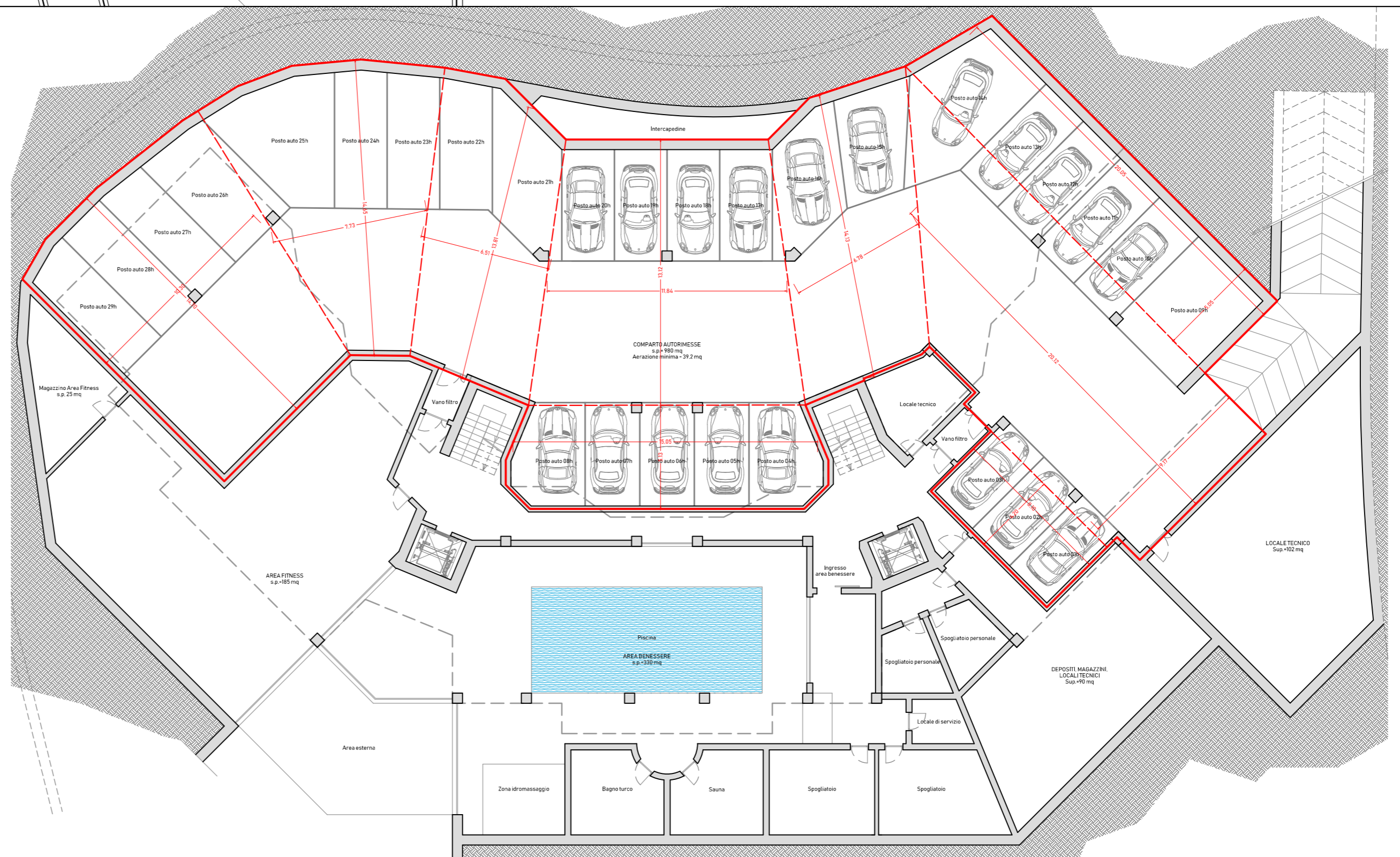
Calcolo Vol. Appart. Vacanza

PIANTA PIANO PRIMO
Scala 1:200



Calcolo Vol. Appart. Vacanza
Calcolo Sup. Coperta

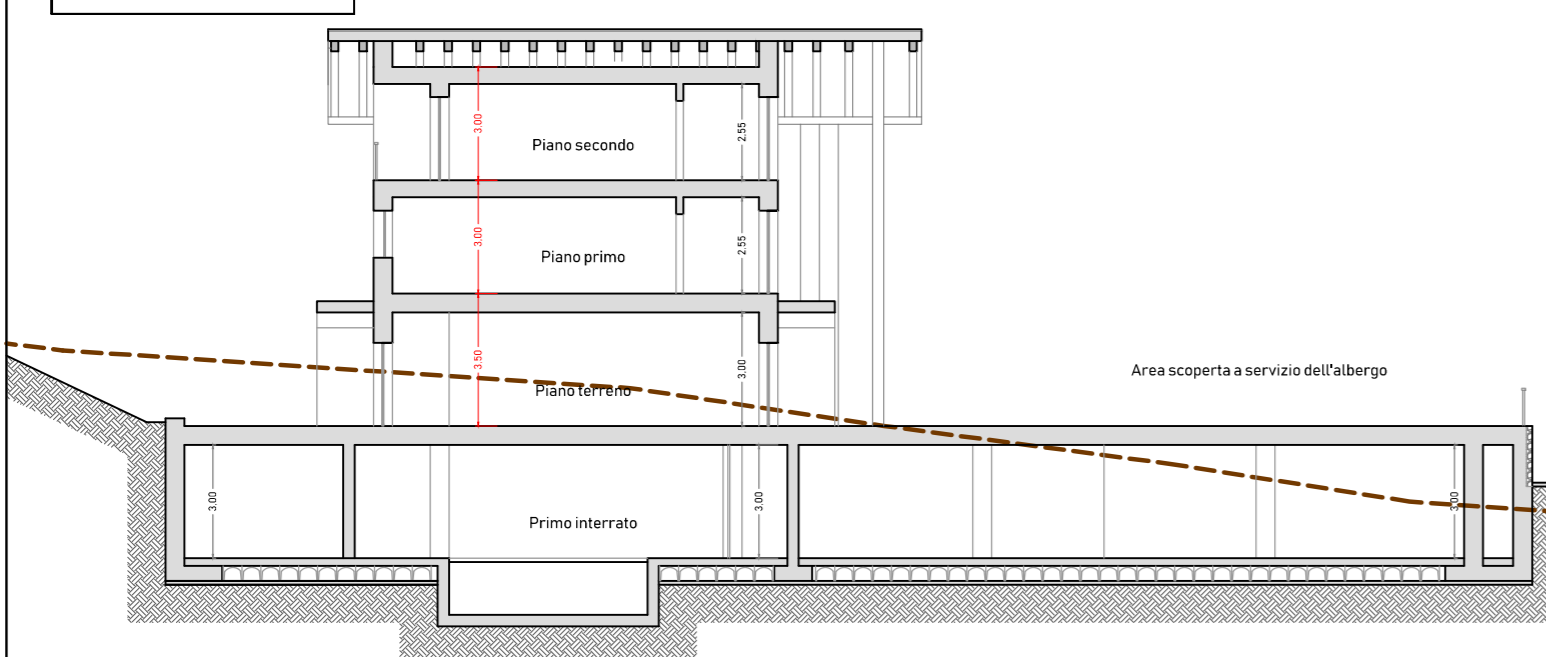
PIANTA PIANO TERRA
Scala 1:200



Calcolo SUL Autorimesse

PIANTA PIANO INTERRATO
Scala 1:200

SEZIONE
Scala 1:200



PROSPETTO SUD
Scala 1:200

